

V O L V O

Lighting Overview

VOLVO TRUCKS ACCESSORIES





*Roof bar mounted lights for demonstration purposes only.

Jumbo LED

Auxiliary High Beam with Daytime Running Light



HELLA - AUX LIGHT KIT (2) JUMBO LED
(Kit includes wiring harness)

26100X011AA

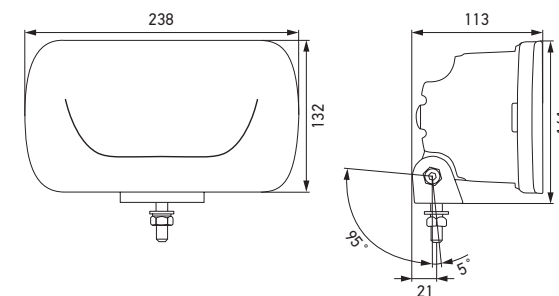
HELLA - AUX LIGHT KIT (4) JUMBO LED
(Kit includes wiring harness)

26100X012AA

Technical Information

- Auxiliary high beam headlamp with state-of-the-art optics and impressive LED light pattern for individual style
- Edge light technology intensifies the characteristic contours of the highly recognizable LED position light.
- Immediate response for attention-grabbing headlight flashing
- Impact-resistant housing made of high-quality thermoplastic material
- Sturdy fastening bracket made of zinc-coated sheet steel with wide adjustment range
- Electronics components qualified according to automotive-standard
- Multi-voltage: suitable for 12 V and 24 V rated voltage
- High beam with reference number 25 and with position light
- ECE type-approved (ECE R149 high beam, ECE R148 position light, ECE R10 EMC)
- Weight 980 g (significantly lower weight than die-cast aluminum housings of comparable size)
- Particularly energy-efficient and fuel-saving:
 - Power consumption at 12 V: position light 1.3 W and high beam 8 W
 - Power consumption at 24 V: position light 2.7 W and high beam 8 W

* Adaptive high beam disabled when using auxiliary light function



Low beam



High beam with Auxiliary Lights on



Light output depicts vehicle high beams with 4*Jumbo LED mounted on nudge bar and 4*Jumbo LED mounted on cabin roof



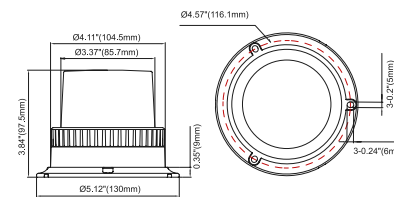
B12 3LED Amber Beacon

Clear and Amber Lens



ROTATING BEACON LIGHT LED SMALL FITTED ON LEFT / ROTATING BEACON LIGHT LED SMALL FITTED ON RIGHT
(Kit supplied with wiring harness and bracket)
26600X001AA

AMBER ROTATING BEACON LIGHT AVAILABLE ON REQUEST
26600X002AA

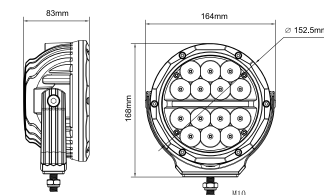


Technical Information

- Non-volatile memory recalls last flash pattern used at power up.
- Reverse polarity protection.
- Weatherproof and vibration resistant design.
- Approval: ECE R10, SAE Class II Compliance.
- Material: Polycarbonate Lens
- LED power: 3*1 W
- Current: 0.2A @ 12.V, 0.1A @ 24V
- 5 Flash patterns
- Multi-voltage: suitable for 12 V and 24 V rated voltage
- Beacon fitted on Volvo supplied bracket

Supernova LED

Auxiliary High Beam



HELLA - AUX LIGHT KIT (2) 6" SUPERNOVA
(Kit includes wiring harness)
26100X009AA

HELLA - AUX LIGHT KIT (4) 6" SUPERNOVA
(Kit includes wiring harness)
26100X010AA

Technical Information

- Cutting-edge design with high-powered LED's
- Driving light pattern that proves optimal beam distance and spread to create the ultimate driving experience
- Features a daytime running light
- Approval: ECE
- Material: Die-cast aluminum housing with polycarbonate lens
- LED power: 14*5 W
- Lumen's: 8400 lm
- Current: 5.83A @ 12V, 2.92A @ 24V
- Multi-voltage: suitable for 12 V and 24 V rated voltage
- * Adaptive high beam disabled when using auxiliary light function

Low beam



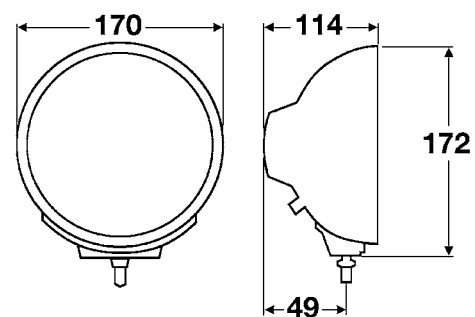
High beam with Auxiliary Lights on



Light output depicts vehicle hi beams with 4*Supernova 6" Auxiliary High Beams mounted on nudge bar

Luminator

Auxiliary High Beams



HELLA - AUX LIGHT KIT (2) LUMINATOR CHROME
(Kit includes wiring harness)
26100X001AA

HELLA - AUX LIGHT KIT (4) LUMINATOR CHROME
(Kit includes wiring harness)
26100X002AA

HELLA - AUX LIGHT KIT (2) LUMINATOR BLACK
(Kit includes wiring harness)
26100X003AA

HELLA - AUX LIGHT KIT (4) LUMINATOR BLACK
(Kit includes wiring harness)
26100X004AA

HELLA - SINGLE LUMINATOR POLYCARB
LENS COVER
26100X013AA

- Technical Information**
- Approval: ECE-R112, E1 1901 (Ref. 37,5)
 - Material: (Chrome) Chrome-plated zinc die-cast housing
 - Material: (Black) High-quality zinc die-cast housing
 - Light Source: H1 24V Halogen bulb
 - Lumen's: 1900 lm per bulb
 - Current: 2.92A @ 24V
 - Multi-voltage: suitable for 24 V rated voltage
- * Adaptive high beam disabled when using auxiliary light function

Low beam



High beam with Auxiliary Lights on



Light output depicts vehicle high beams with 4*Luminator Chrome mounted on bull bar.



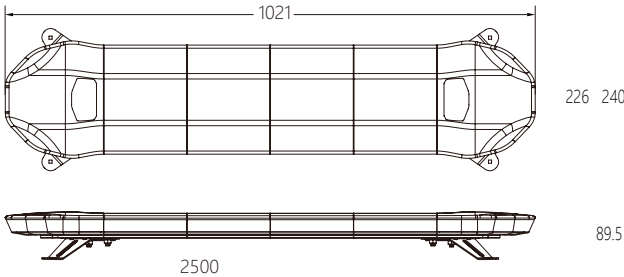


Optical Warning Amber LED Light Bar



HELLA - 1000MM AMBER LED OPTICAL WARNING BAR
(Kit includes wiring harness and bracket)
26600X003AA

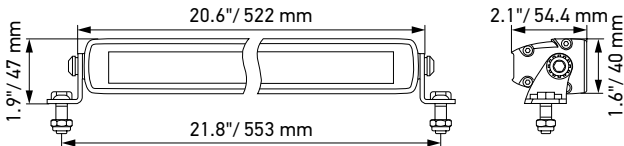
- Technical Information**
- Approvals: ECE R65/ R10(EMC)/ SAE J845 Class 1
 - Power: 43 W
 - Protection Class: IP 67
 - Multi-voltage: Suitable for 12 V and 24 V rated voltage
 - 10 Flash patterns
 - Weight: 1.4kg
 - Light bar fitted on Volvo supplied bracket



20” Black Magic Slim Light Bar



HELLA - 20” BLACK MAGIC LIGHT BAR
OFF-ROAD USE ONLY (kit includes wiring harness)
26100X016AA



HELLA - 20” BLACK MAGIC LIGHT BAR + (2) X 6” SUPERNOVA
OFF-ROAD USE ONLY (kit includes wiring harness)
26100X018AA

- Technical Information**
- Sleek design with full blackout appearance including black brackets
 - Power: 105 W
 - Current consumption: 5.7-8A@12V, 2.8-3.9A@24V
 - Light Source: 21*LED

- Light Performance: 6000lm
- Weight: 1.4kg
- * Light bars for off-road use only.
- * Adaptive high beam disabled when using auxiliary light function

Low beam



High beam with Auxiliary Light on



Light output depicts vehicle hi beams with 1*20” Black Magic Light Bar mounted on bull bar.



SMS2000

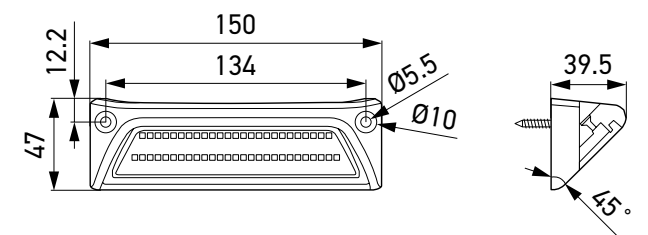
Scene Light



HELLA - SMS2000 SCENE LIGHT KIT
(Kit includes wiring harness and bracket)
26500X002AA

Technical Information

- Homogeneous light distribution all around the vehicle
- Light Source: LED
- Power: 20 W
- Light Output: 2000lm
- Material: Aluminum die cast
- Protection Class IP 68, IP 6K9K, ECE-R10
- Multi-voltage: Suitable for 12 V and 24 V rated voltage
- Weight: 245g
- Mounting Bracket and harness included



Scene light off



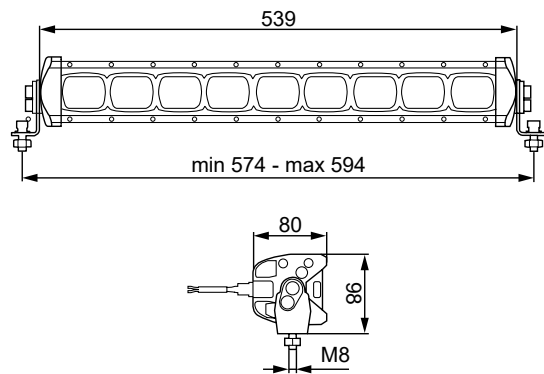
Scene light on



Light output depicts vehicle fitted with 1*SMS2000 Scene Light mounted at the back of the cab.

20” Combo Beam

Light Bar



HELLA - 20“ COMBO BEAM LIGHT BAR OFF-ROAD USE ONLY (kit includes wiring harness)
26100X017AA

- Technical Information**
- LED auxiliary driving lamp in the shape of a light strip
 - 9 high-luminous-intensity, high-power LEDs
 - ECE type tested R112 high beam and ECE R10
 - Power Consumption: 66 W
 - Multi-voltage: Suitable for 12 V and 24 V rated voltage
 - Protection Class: IP 67
 - Weight: 3.1kg
- * Light bars for off-road use only.
* Adaptive high beam disabled when using auxiliary light function

Square Jumbo 220

Auxiliary High Beam

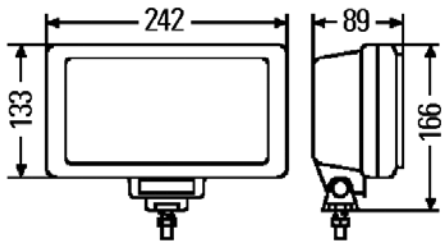


HELLA - AUX LIGHT KIT (2) JUMBO 220 YELLOW (kit includes wiring harness)
26100X005AA

HELLA - AUX LIGHT KIT (4) JUMBO 220 YELLOW (kit includes wiring harness)
26100X006AA

HELLA - AUX LIGHT KIT (2) JUMBO 220 CLEAR (Kit includes wiring harness)
26100X007AA

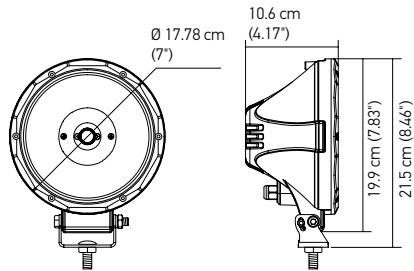
HELLA - AUX LIGHT KIT (4) JUMBO 220 CLEAR (Kit includes wiring harness)
26100X008AA



- Technical Information**
- Light Source: H3 Bulb, ECE Approved
 - Pencil Beam pattern
 - Material: Impact-resistant black ABS housing
 - Multi-voltage: Suitable for 12 V and 24 V rated voltage
 - Light design: Halogen
- * Adaptive high beam disabled when using auxiliary light function

7” ValueFit LED

Auxiliary high beam



HELLA - AUX LIGHT KIT (2) 7” VALUEFIT LED (Kit includes wiring harness)
26100X014AA

HELLA - AUX LIGHT KIT (4) 7” VALUEFIT LED (Kit includes wiring harness)
26100X015AA

- Technical Information**
- Lumen's: 4000 lm
 - Material: Die-cast aluminum housing with polycarbonate lens
 - Power Consumption: 30 W
 - Multi-voltage: Suitable for 12 V and 24 V rated voltage
 - Protection Class: IP 67
 - Weight: 1.42kg
- * Adaptive high beam disabled when using auxiliary light function



V O L V O